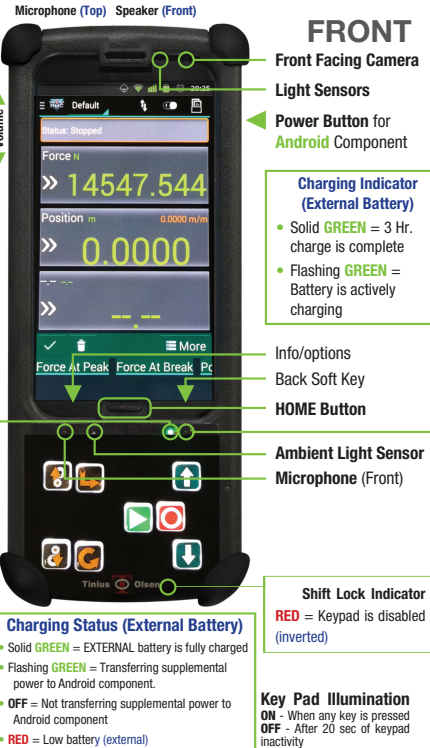




# QUICK START GUIDE



## CONTROLS AND INDICATORS

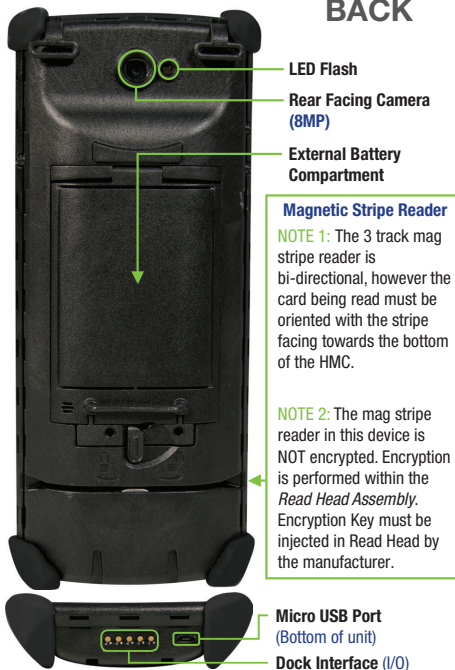


## CONTROLS AND INDICATORS



## CONTROLS AND INDICATORS

### BACK



#### Micro USB Port (Host/Client)

Port will charge INTERNAL battery when connected to a BC 1.1 compatible hub. When a connection is made on this port, the physical keyboard will not function. When using this port to charge the internal battery, a "heavy duty" USB cable should be used.

## Spare Battery



Insert a spare battery into the rear receptacle of the HMC Handheld Dock, with Contact Indicator (**ORANGE Circle**) pointing downwards to charge. This spare battery can be "hot swapped" when the external battery runs low, to extend the battery life of the HMC Handheld.



Snap battery under the retaining clip to ensure that the battery maintains good electrical contact during charging.

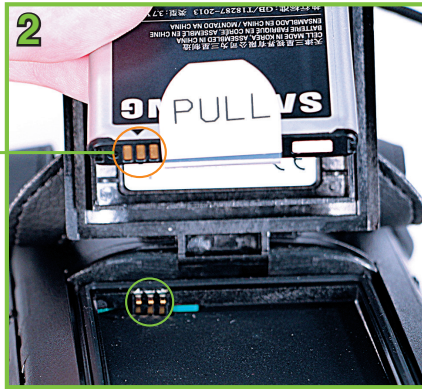
## Install / Replace Battery



- 1) Slide the battery door hatch to the unlocked position (Right)

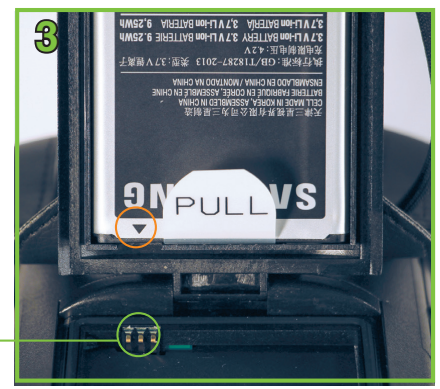


When new HMC Handhelds are shipped, the battery compartment is empty.



- 2) If replacing battery, use PULL tab to remove the battery. If receiving a new HMC Handheld, insert battery. Remember to turn the battery so that the battery contacts align with the Contact Position indicator mark (ORANGE Circle)

Battery contacts in Android component



- 3) Insert the right edge of the battery into the battery pocket located in the battery door; then press the left edge of the battery into position.

**\*Never place the battery directly into the battery well. Installing the battery in this manner can damage the battery contacts in the HMC handheld.**

**NOTE:** Observe the position of the Contact Position indicator mark (ORANGE Circle)

## Dock Front



Power Indicator

HMC Handheld  
Present and Connected  
**GREEN** = Connected  
**RED** = Not Connected

Spare Battery Charge Indicator

- Flashing **GREEN** - Battery is actively charging
- Solid **GREEN** - 3 Hr. Charge cycle complete

Ambient Light Sensor

Controls the brightness of LEDs.

## Dock Back



DC Power to Dock  
12VDC @ 2A

Diagnostic Port  
(factory use only)



▲ Supplied 12VDC, 2A power supply

Micro USB Port  
(Host/Client)

**NOTE:** Power can not be supplied to the dock via this port. However, power present on a connection to this port will not harm the device.